



ALTERNATOR DATA

MODEL 96A01424-S

K.V.A. 100

SERIAL 2026573

PHASE 3

VOLTS 120/240

HERTZ 60

AMPS 240.5

R.P.M. 1800

POWER FACTOR .8

KW 80

CLASS F WINDING INSULATION AT 40° C

**GENERAC CORP.
WAUKESHA, WIS.**

45452

MADE IN U.S.A.

OLY

OLFP

50
11-12-09

BATTERY CHARGER
10 AMP-12 VOLT DC
AUTOMATIC FLOAT EQUALIZE
INPUT: 120 VAC 50/60 Hz
Part No. 79535

POWER



INPUT

4 Amp

OUTPUT

12 Amp

CAUTION
120-VOLTS AC INSIDE AT ALL TIMES.
DISCONNECT AT CUSTOMER SOURCE
BEFORE REMOVING COVER TO
SERVICE

COMMERCIAL
HEAVY DUTY
12VDC



NOT IN AUTOMATIC
START MODE

Low

Level

OVER CRANK

OVER SPEED

TEST RESET

HIGH COOL. TEMP.

LOW OIL PRESS

RPM SENSOR LOSS



PREHEAT
30-SEC.
MAX.



START



STOP

AUTO



OFF

MANUAL

FUSE
15-A.



INCREASE



VOLTAGE
ADJUST

3-6

PREALARM LOW OIL PRESS.

PREALARM HIGH COOL TEMP.

LOW COOL TEMP.

ALARM HORN ON-OFF

HIGH BATT. VOLTAGE

LOW BATT. VOLTAGE

RUPTURE BASIN FILLING

LOW FUEL

CIRCUIT BREAKER OPEN

**GENERAC CORP.
WAUKESHA, WIS.**

45452

MADE IN U.S.A.

GENERAC CORP.

MODEL NO. 95A 01424 S

DATE 5/17/96

TYPE CD080-J365-0D18C BY NC

| GROUP | DESCRIPTION | ASSEMBLY NUMBERS |
|-------|----------------|-------------------------|
| A | GENERATOR | 86213 90167 |
| B | CONTROL PANEL | 85060 |
| C | MOUNTING BASE | 96673 96674 98091 |
| D | ENGINE & ACCY. | 95253 99587 98140 98471 |
| F | COMPARTMENT | 94963 96778 88392 96682 |
| G | WIRING DIAGRAM | 82233 87625 95256 95257 |
| | | 85056 85057 86206 86173 |

WHEN ORDERING REPAIR PARTS, GIVE THE ABOVE INFORMATION

NOT IN AUTOMATIC START MODE

LOW

LOW

OVER CRANK

OVER SPEED

TEST RESET

HIGH COOL TEMP

LOW OIL PRESS

RPM SENSOR LOSS

V

A

Hz/RPM 65/1850

60/1800

240V

150 200 250

TEMP

50

OIL PRESS

0 60 AMP

QUARTZ

TOTAL HOURS

PREHEAT

START

AUTO

FUSE 15-A

MANUAL

STOP

OFF

INCREASE

VOLTAGE ADJUST

PREALARM LOW OIL PRESS

PREALARM HIGH COOL TEMP

LOW COOL TEMP

ALARM HORN ON-OFF

HIGH BATT. VOLTAGE

LOW BATT. VOLTAGE

RUPTURE BASIN FILLING

LOW FUEL

CIRCUIT BREAKER OPEN

OIL TEMP

DANGER

Connection of this unit to an electrical system which is normally supplied by an electric utility requires use of a double throw transfer switch. Failure to isolate electric system from utility distribution system while generator is operating will result in backfeed and may cause injury or death to utility workers. See operating instructions for additional information.



PARTS

CAPACITY

1200 TANK

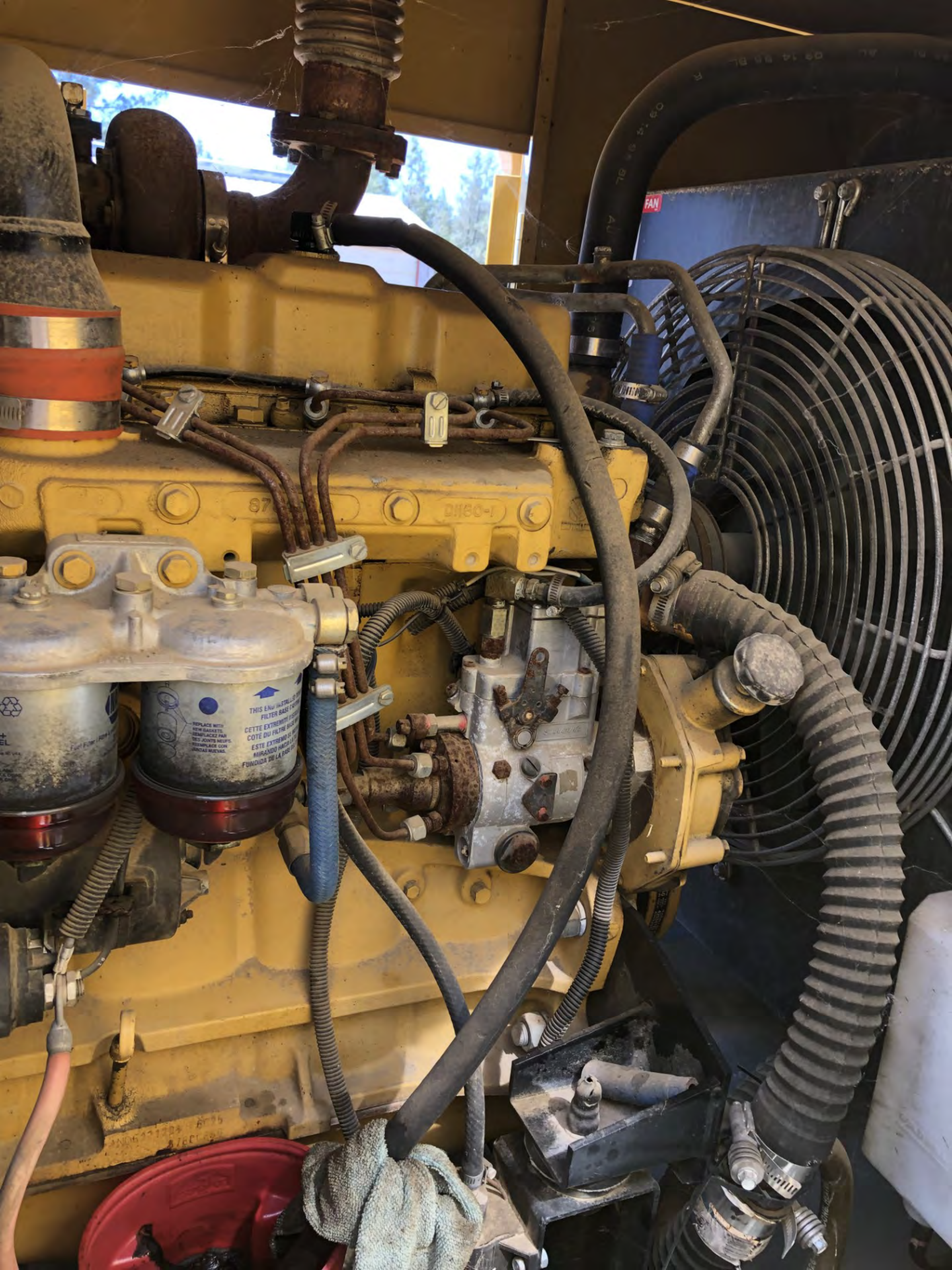
1200 TANK

240V



INCREASE







OLYMPIAN

EXCLUSIVELY FROM YOUR
CATERPILLAR DEALER

DANGER
HIGH VOLTAGE
CONTACT WITH TERMINALS
MAY RESULT IN PERSONAL
INJURY OR DEATH



ALTERNATOR DATA

| | |
|--------|-----------------------------|
| MODEL | K.V.A. |
| SERIAL | PHASE |
| VOLTS | HERTZ |
| AMPS | R.P.M. |
| POWER | KW |
| TACHOR | |
| CLASS | WINDING INSULATION AT 40° C |

GENERAC CORP.
WAUKESHA, WIS.
MADE IN U.S.A.

GENERAC CORP.

| | |
|--------------|----------|
| MODEL NO. | DATE |
| SERIAL | ASSEMBLY |
| REPAIR PARTS | |

WHEN REPAIRING REPAIR PARTS, GIVE THE ABOVE INFORMATION



OIL TEMP

OIL