



## WATER EQUIVALENTS TABLE

1 Cubic Foot = 7.48 gallons = 62.4 pounds of water  
1 Acre Foot = 43,560 cubic feet = 325,900 gallons

An acre foot covers (1) acre of land (1) foot deep

1 cubic foot per second (cfs) = 450 gallons per minute or 646,320 gallons per day

For 24 hours = 1.983 acre feet

For 30 days = 59.5 acre feet

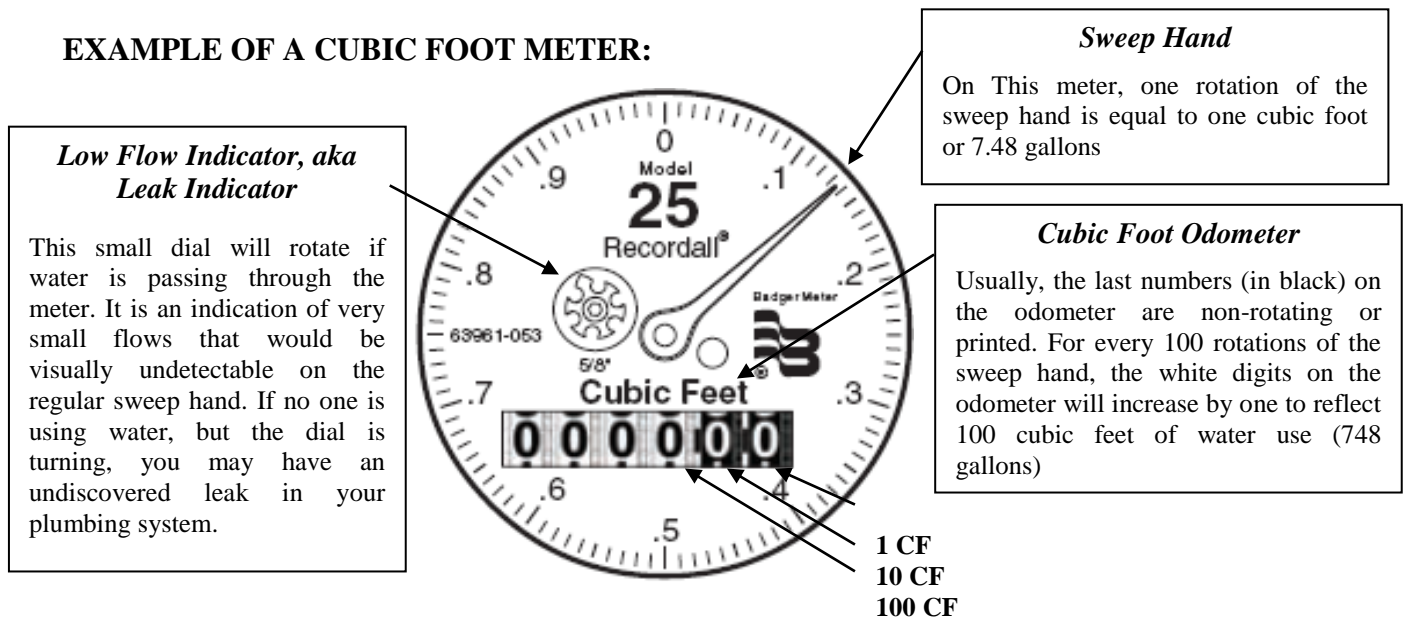
For one year = 724 acre feet

## PROCEDURE FOR METER READING

If register lens is dirty, a light wipe with a damp cloth will clear lens for an accurate reading. Always remember to close the register cover after reading meter to avoid exposure to cracking or scratching of lens.

One of the most important factors in a correct reading is to note the proper number of digits. Read the meter register from left to right.

### **EXAMPLE OF A CUBIC FOOT METER:**



**BILLING:** You will be billed for water service monthly; thus, the water meter will be read as nearly as possible on the same day every month. The bills are due and payable on the date of receipt and become delinquent on the 20th of each month thereafter. Payments can be made to the District office by mail, in person, or online at: <https://www.drfrey.biz/2969/customerlogin.html> The District is currently using the D.R. Frey.biz which allows for automatic payment deductions and charges a service fee of \$3.95.

**OFFICE HOURS:** The District office is open from 8:00 a.m. to 12:00 noon and from 1:00 p.m. to 5:00 p.m., Monday through Friday except holidays. For after-hour emergencies, there is an answering service. Please call 357-2121 for after hours emergencies